

README

We updated human age inference and origination mechanism inference based on Ensemble version95. In addition to a new phylogenetic tree (Fig 1), the same operation which is detailed in Shao *et. al.* (2019) is used to infer age and mechanism information.

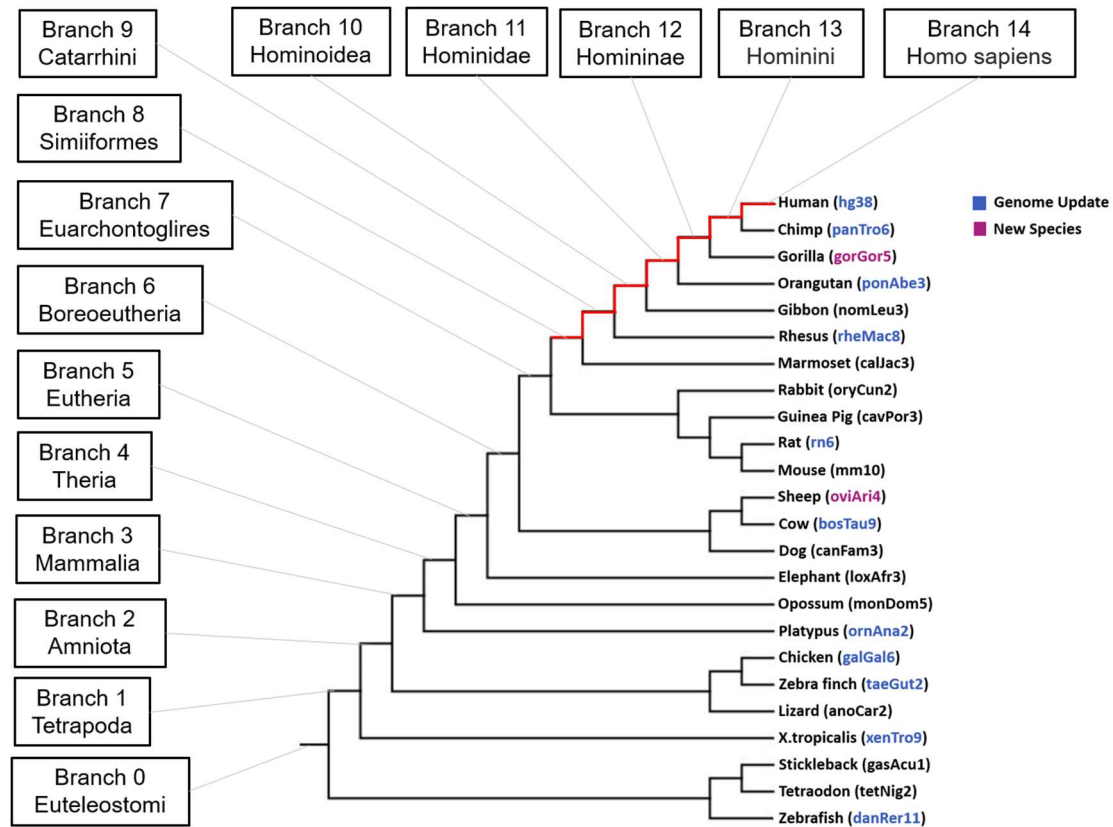


Fig 1. Updated phylogenetic tree

Newly released genome assembly were marked in blue, while newly added species were marked in pink.

Reference:

Shao, Y., Chen, C., Shen, H., He, B. Z., Yu, D., Jiang, S., Zhao, S., Gao, Z., Zhu, Z., Chen, X., Fu, Y., Chen, H., Gao, G., Long, M., & Zhang, Y. E. (2019). GenTree, an integrated resource for analyzing the evolution and function of primate-specific coding genes. *Genome research*, 29(4), 682–696. <https://doi.org/10.1101/gr.238733.118>